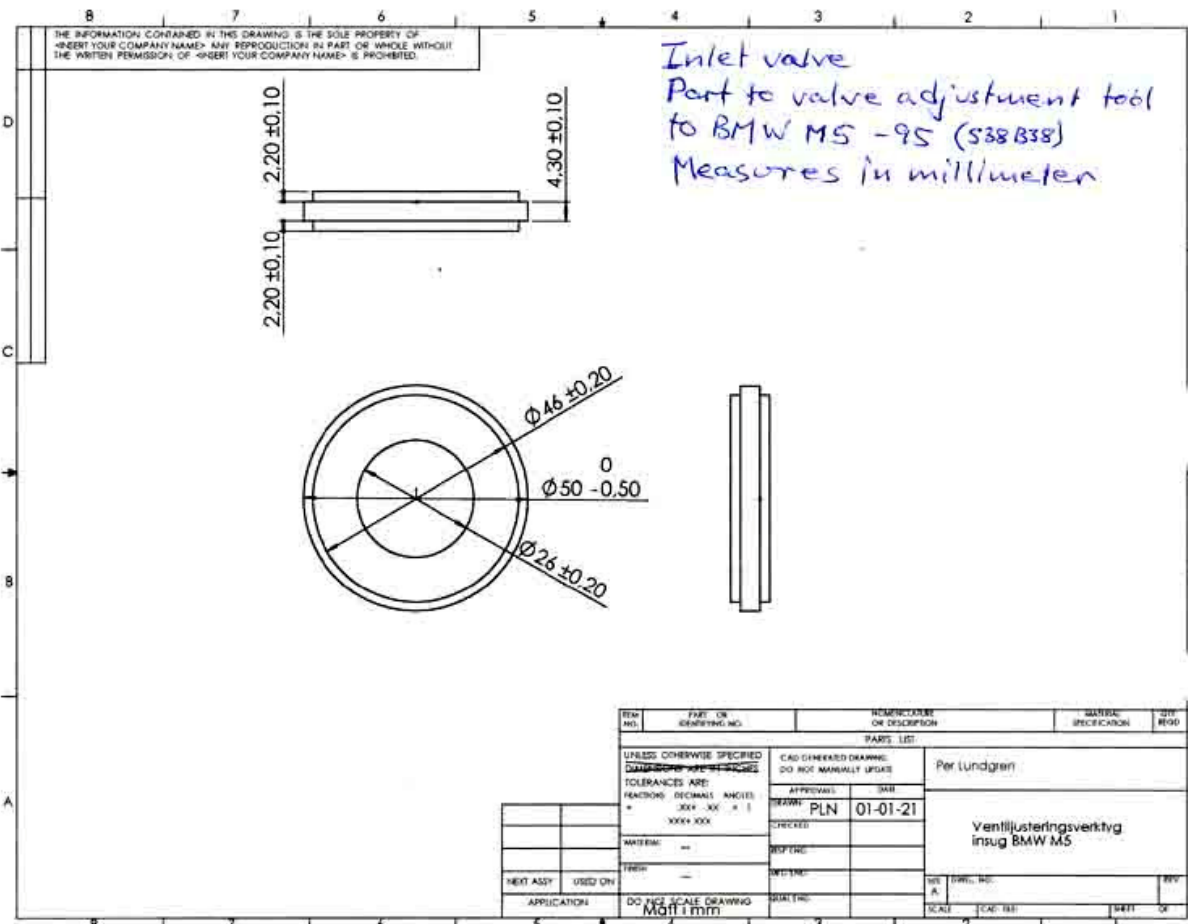
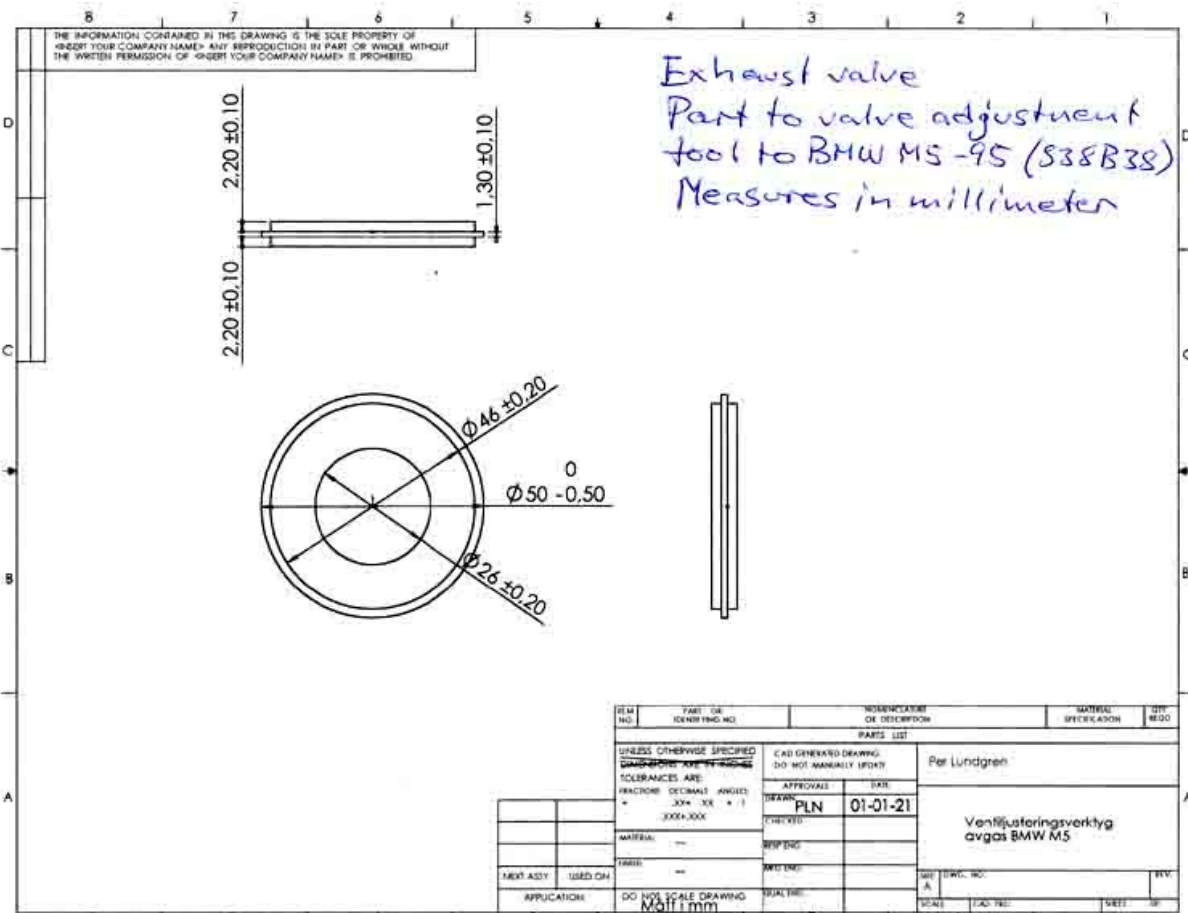


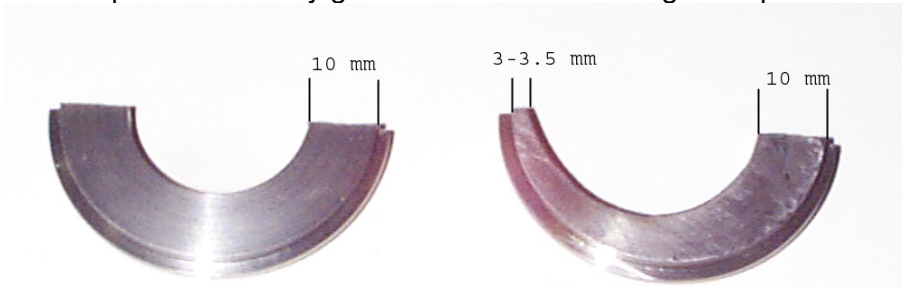
**How to do your own valve adjustment tool for BMW M5 -95 (S38B38). Will probably also fit S38B36.**



The left part fits the exhaust valves and the right part fits the inlet valves



The left part is manually grinded and filed to the right shape



The thick “half moon” (to inlet valves) is welded to one shaft and the thin “half moon” (to exhaust valves) is welded to another shaft

